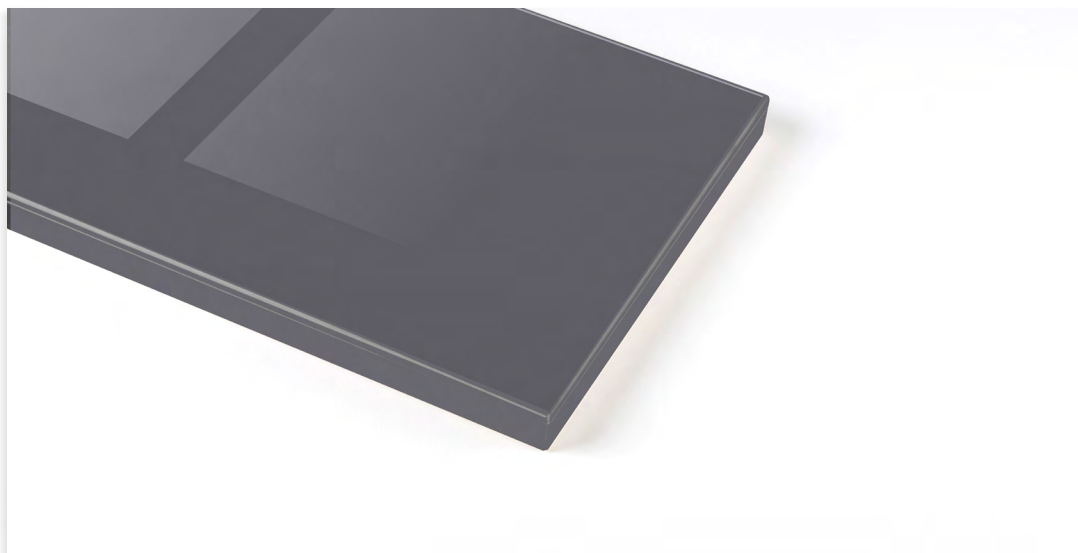


## SOMA

### ANTHRACITE

BACK PAINTED POLYCARBONATE

| Item description                      | Current Stock | Discount    | Sell price | Unit  |
|---------------------------------------|---------------|-------------|------------|-------|
| Panel 2850x1240x19mm                  | 8 Sheet       | <b>67 %</b> | \$12.00    | Sqft  |
| Glue Edge Tape<br>Gloss/Matt 23x1.5mm | 341 Meter     | <b>70 %</b> | \$2.25     | Meter |
| Finished Slab Door                    |               | <b>61 %</b> | \$18.00    | Sqft  |

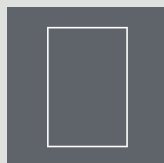


AVAILABLE WHILE SUPPLIES LAST

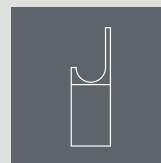
### ABOUT THE PRODUCT

Produced from high quality, durable polycarbonate, our Soma Anthracite delivers a brilliant, lively look that elevates the ambience of any interior setting. The front face of all panels feature a scratch resistant surface and come with a colour matched back face.

### MADE TO ORDER AVAILABLE OPTIONS



Slab Doors



Rincomatic  
Solutions

*To order any of our products, please contact our CSR team or locate your nearest sales representative by visiting our website.*